

Tualatin Sublease

10490 SW Manhasset Drive, Tualatin, OR 97062

Up to 20,000 SF of available warehouse space in Tualatin located 1.5 miles west of I-5 off of Tualatin Sherwood Road. This building is brand new with 26' ceilings, 2 dock doors and one grade door. The building is ESFR sprinklered with a state of the art ventilation system, overhead fans and skylights.



Sublease Available:

Up to 20,000 SF

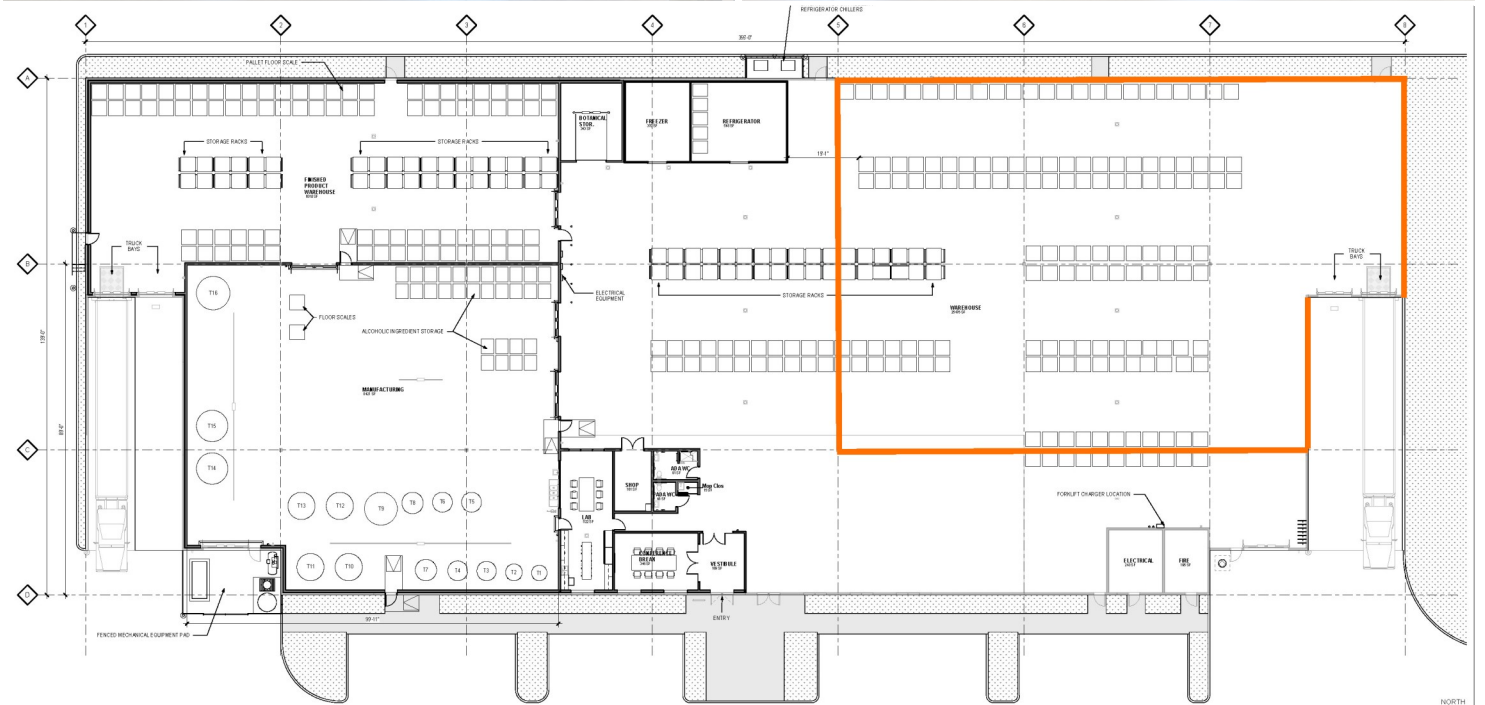
\$.85 PSF, NNN
Flexible Terms

Highlights:

- 1.5 Miles west of I-5
- Access to two dock doors and one drive in bay
- Access to restrooms
- 26' Ceilings
- ESFR Sprinklered
- Large overhead fans
- Full building security system with cameras and door sensors
- Full building high speed wifi

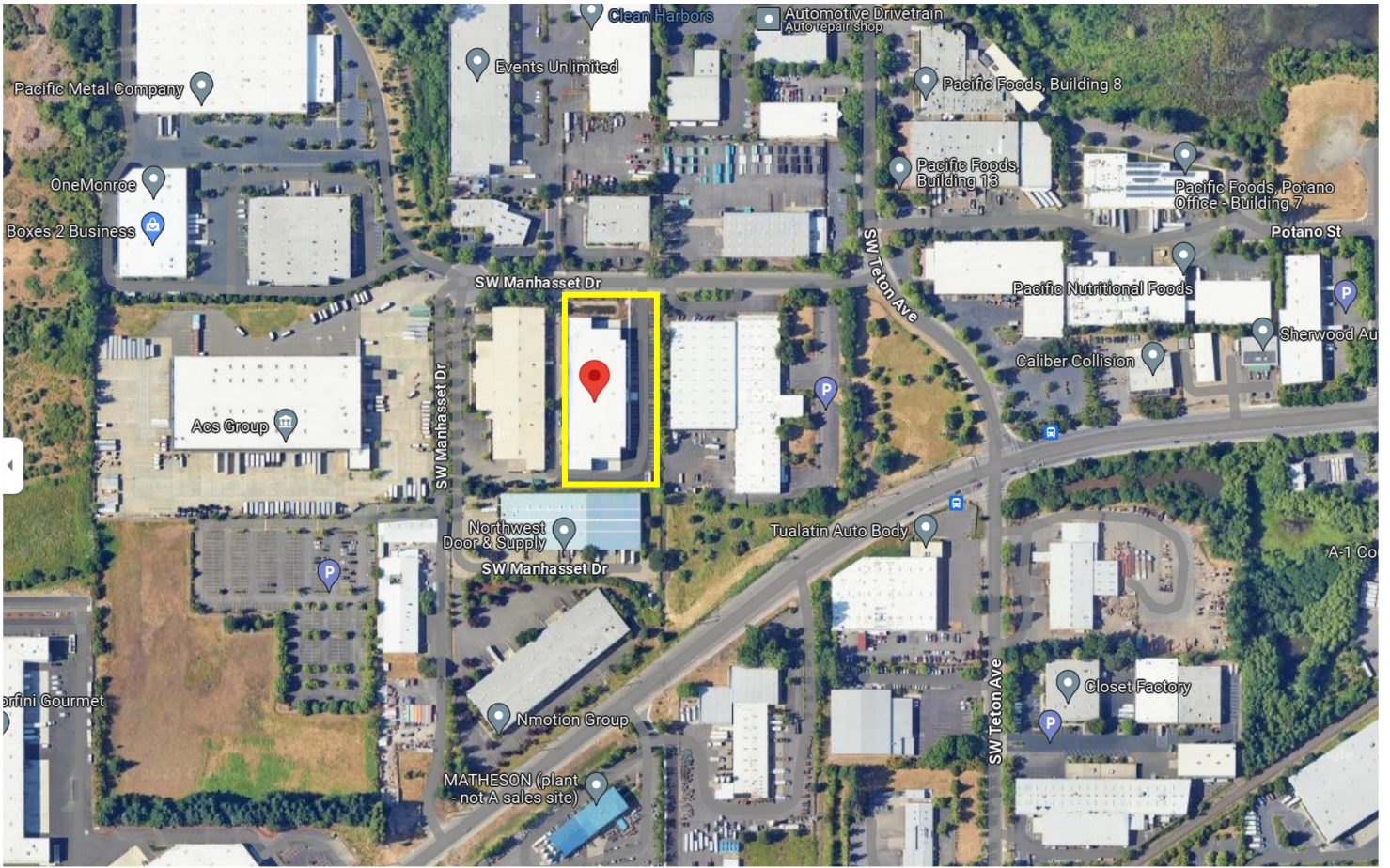
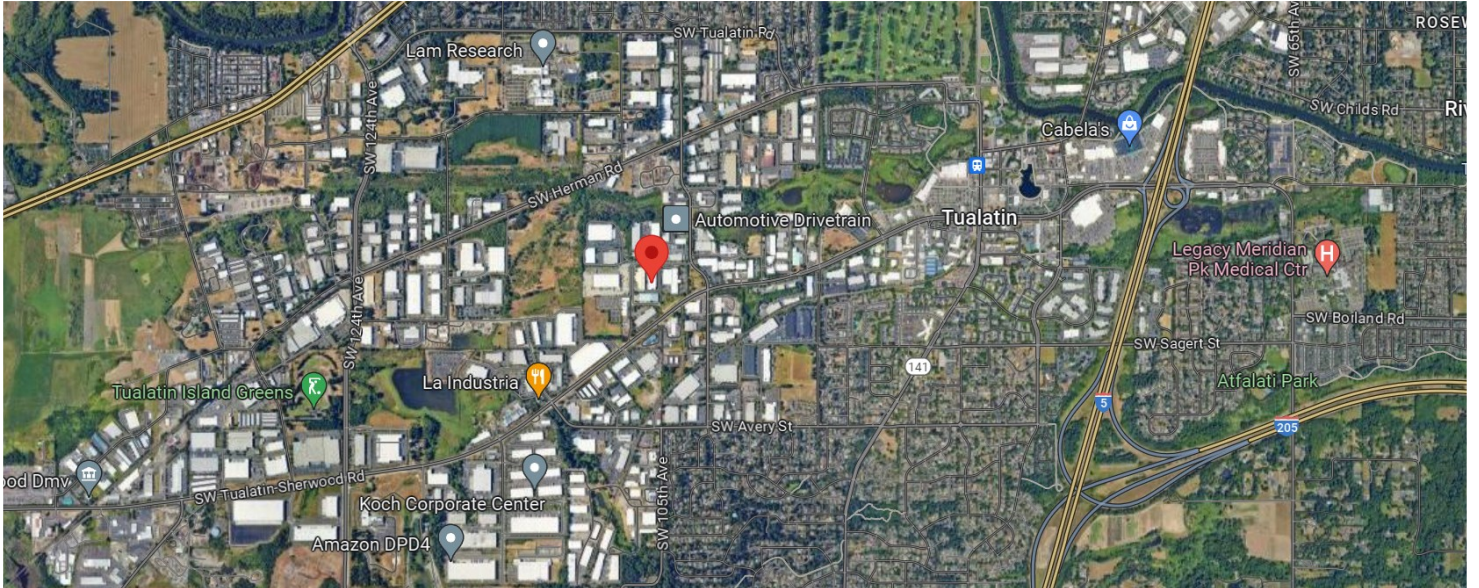
Ashley Rhea | ashley@barnardcommercial.com | 503.616.2942
www.barnardcommercial.com | 503.675.0900
5200 Meadows Road, Suite 150, Lake Oswego, OR 97035

Tualatin Sublease



Ashley Rhea | ashley@barnardcommercial.com | 503.616.2942
www.barnardcommercial.com | 503.675.0900
5200 Meadows Road, Suite 150, Lake Oswego, OR 97035

Tualatin Sublease



Ashley Rhea | ashley@barnardcommercial.com | 503.616.2942
www.barnardcommercial.com | 503.675.0900
5200 Meadows Road, Suite 150, Lake Oswego, OR 97035