

10950 SE Division St, Portland, OR 97266



Stand alone building available just East of I-205 on Division with high daily traffic counts of over 38,000 cars per day. This property offers retail exposure with the addition of flex/warehouse space in the back. There are two grade level roll up doors and a large off street parking lot.

AVAILABLE:

8,400 SF

**Do not disturb existing Tenant
Available 9/1/2025*

**\$18.00 SF/Year, NNN
NNN Approximately \$3.75**

PROPERTY HIGHLIGHTS:

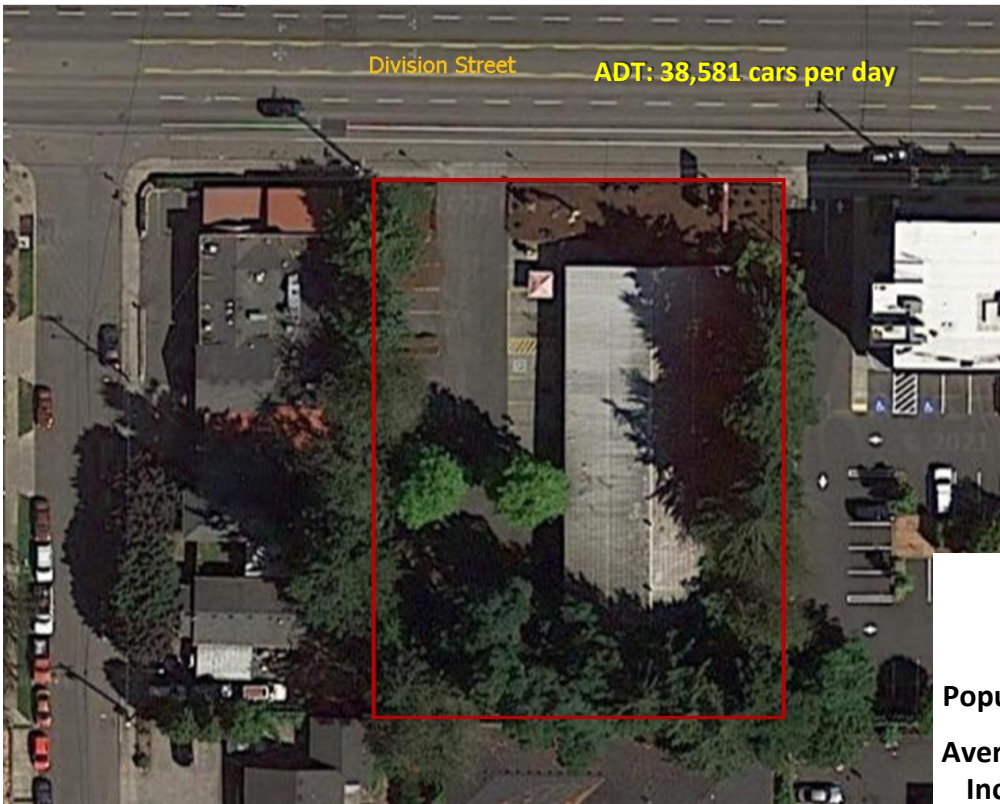
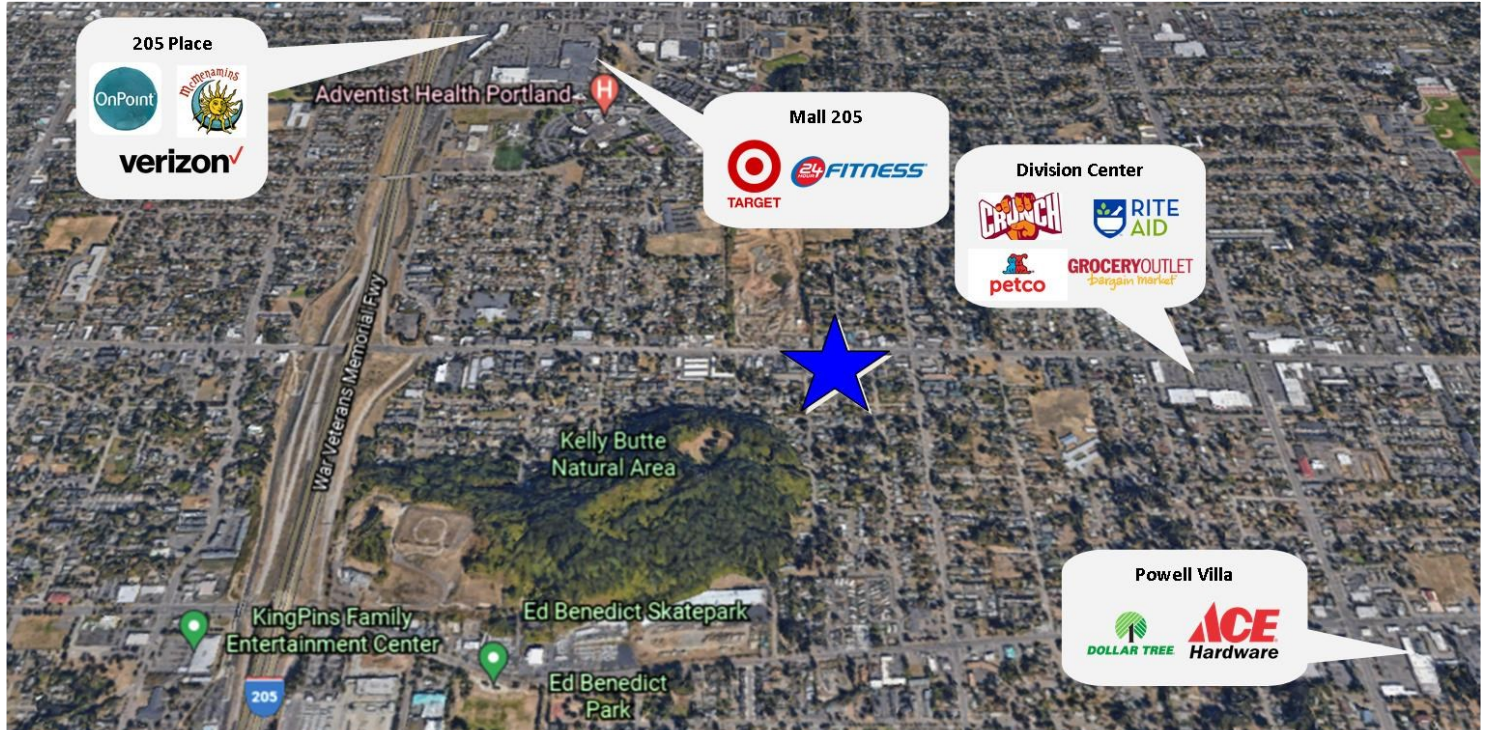
- 2 grade level roll up doors
- Large pylon sign
- Large off street parking lot
- Easy access to I-205



Ashley Rhea | 503.616.2942 | ashley@barnardcommercial.com

Craig Barnard | 503.616.2941 | craig@barnardcommercial.com

www.barnardcommercial.com | Mail: 5200 Meadows Road Suite 150, Lake Oswego OR 97035



Demographics

	1 Mile	3 Mile	5 Mile
Population:	22,600	193,584	458,431
Average HH Income:	\$64,627	\$76,063	\$90,482

Ashley Rhea | 503.616.2942 | ashley@barnardcommercial.com
 Craig Barnard | 503.616.2941 | craig@barnardcommercial.com
www.barnardcommercial.com | Mail: 5200 Meadows Road Suite 150, Lake Oswego OR 97035

All information contained herein was obtained from sources deemed reliable. No guarantee is made with respect to accuracy. Specifications subject to change without notice.