

10114 SE Division Street, Portland, OR 97266



Located just East of I-205 on SE Division with **high daily traffic counts** this property has easy access and **off street parking**. The available space is an endcap with a rare **dedicated pylon sign** ensuring maximum visibility and branding.

Available:

6,000 SF
End Cap

\$18.00 PSF/Year, NNN
Approx. \$5.00 NNN

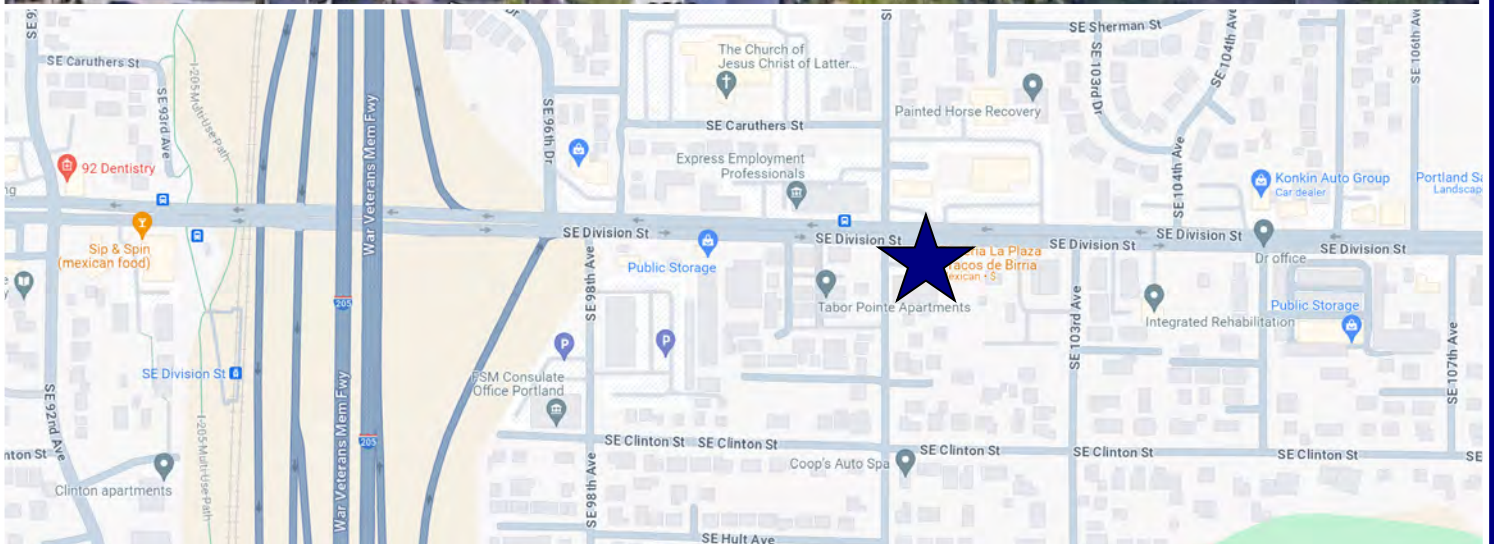
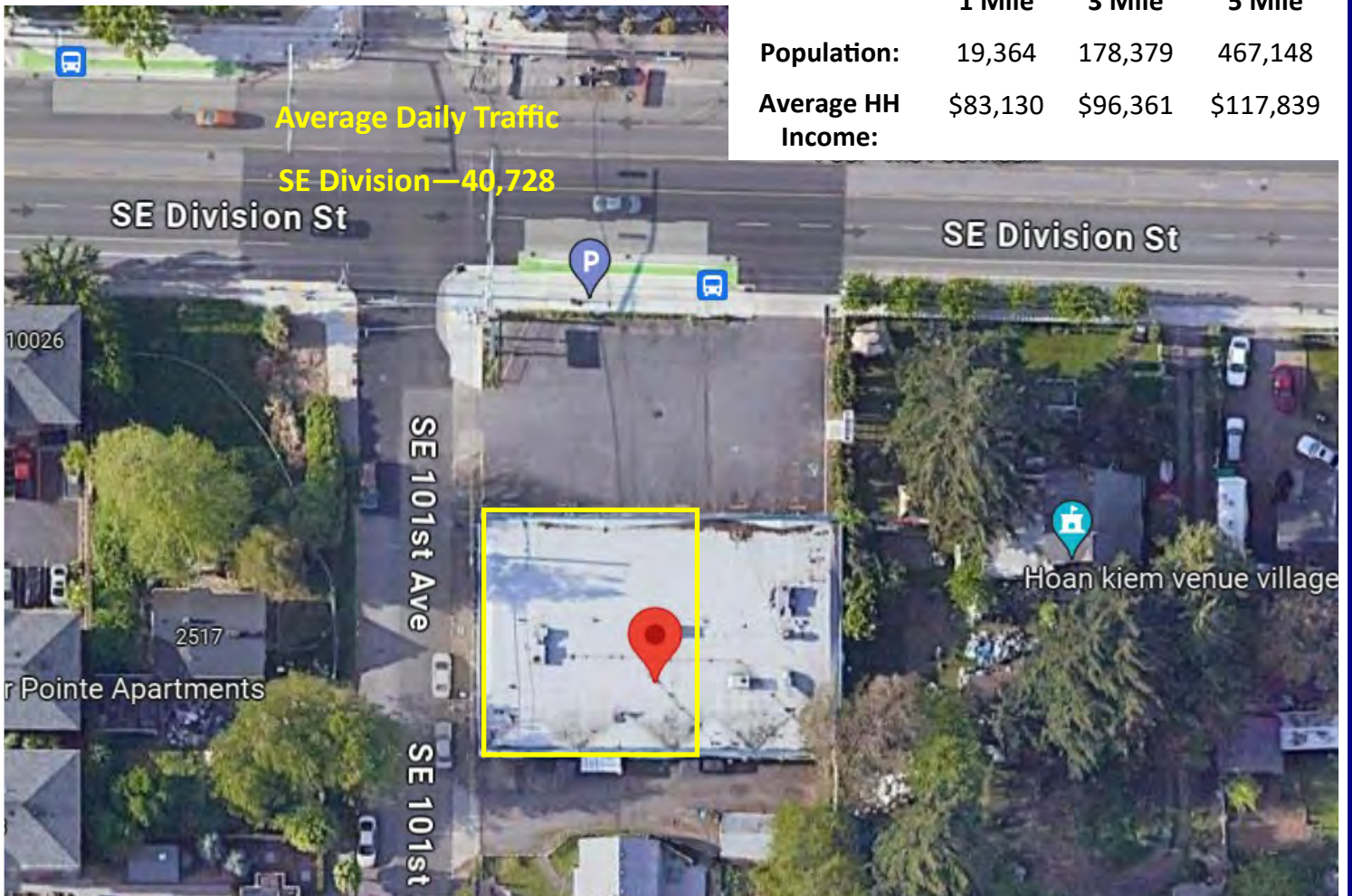


Ashley Rhea | 503.616.2942 | ashley@barnardcommercial.com
www.barnardcommercial.com | 5200 Meadows Road Suite 150, Lake Oswego OR 97035

All information contained herein was obtained from sources deemed reliable. No guarantee is made with respect to accuracy. Specifications subject to change without notice.

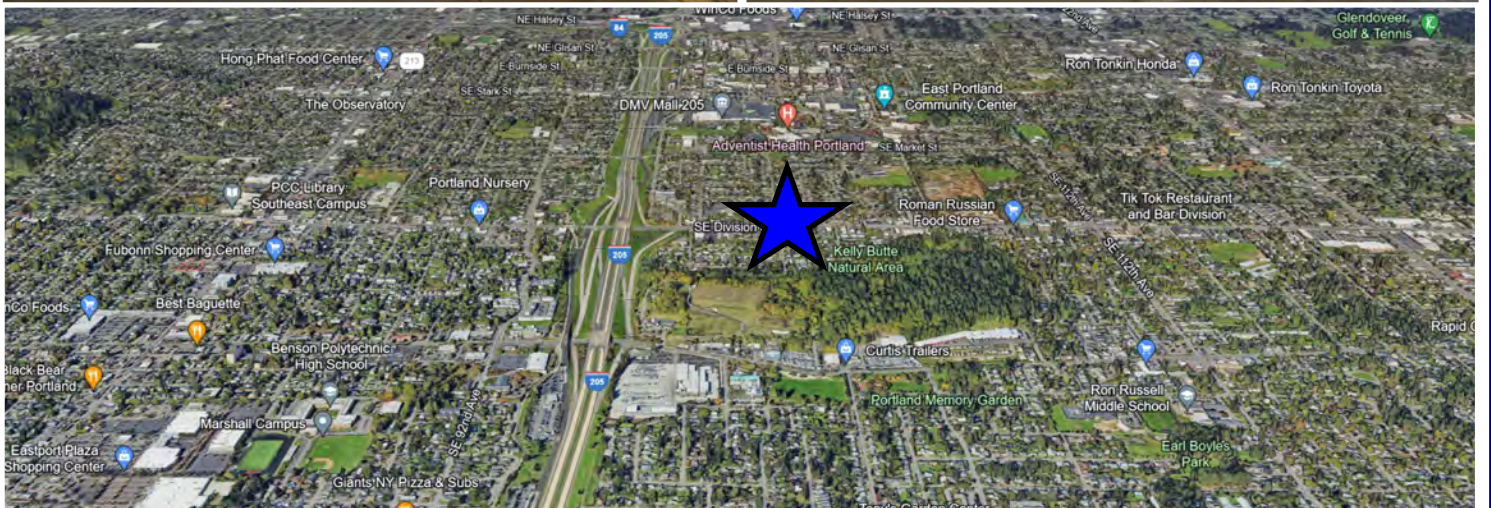
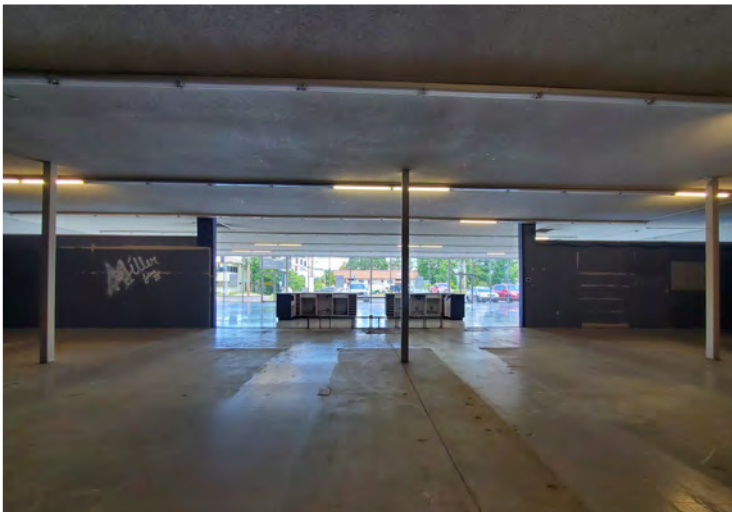
1 Mile 3 Mile 5 Mile

Population:	19,364	178,379	467,148
Average HH Income:	\$83,130	\$96,361	\$117,839



Ashley Rhea | 503.616.2942 | ashley@barnardcommercial.com
www.barnardcommercial.com | 5200 Meadows Road Suite 150, Lake Oswego OR 97035

All information contained herein was obtained from sources deemed reliable. No guarantee is made with respect to accuracy. Specifications subject to change without notice.



Ashley Rhea | 503.616.2942 | ashley@barnardcommercial.com
www.barnardcommercial.com | 5200 Meadows Road Suite 150, Lake Oswego OR 97035

All information contained herein was obtained from sources deemed reliable. No guarantee is made with respect to accuracy. Specifications subject to change without notice.