

Results Driven Retail Solutions<sup>SM</sup>

**Barnard Commercial**  
Real Estate

# 10114 SE Division

10114 SE Division Street, Portland, OR 97266



Located just East of I-205 on SE Division with **high daily traffic counts** this property has easy access and **off street parking**. The available space is an endcap with a rare **dedicated pylon sign** ensuring maximum visibility and branding.

**Available:**

**6,000 SF**  
**End Cap**

**\$18.00 PSF/Year, NNN**  
**Approx. \$5.00 NNN**



Ashley Rhea | 503.616.2942 | ashley@barnardcommercial.com  
www.barnardcommercial.com | 5200 Meadows Road Suite 150, Lake Oswego OR 97035

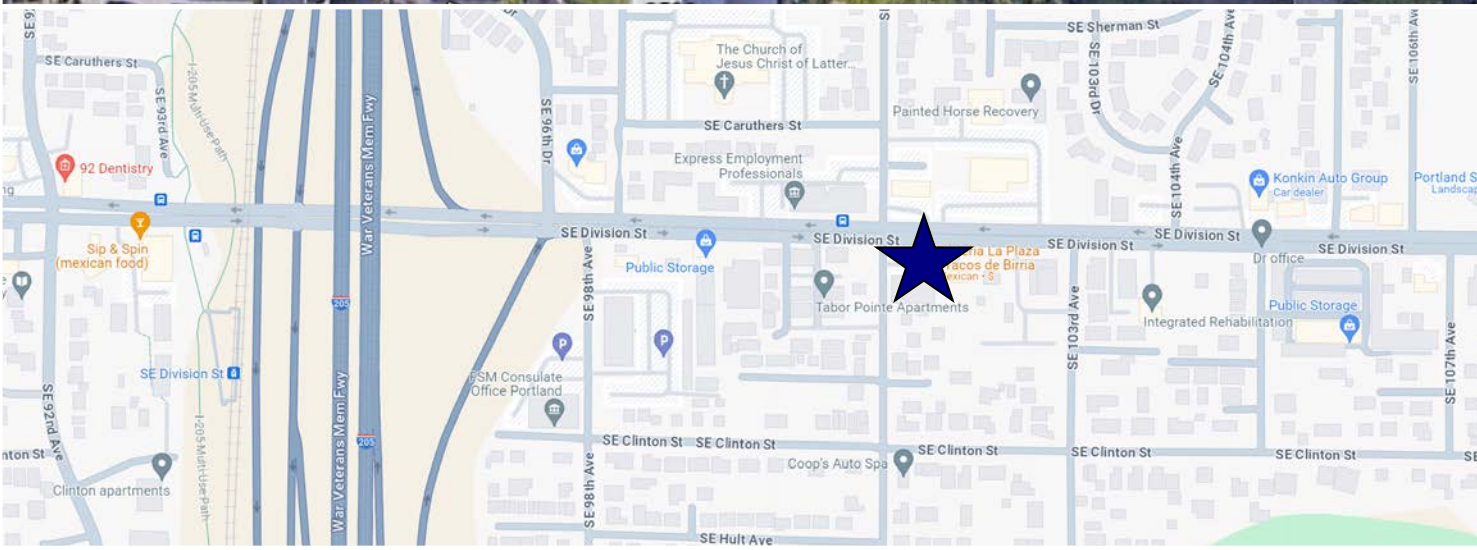
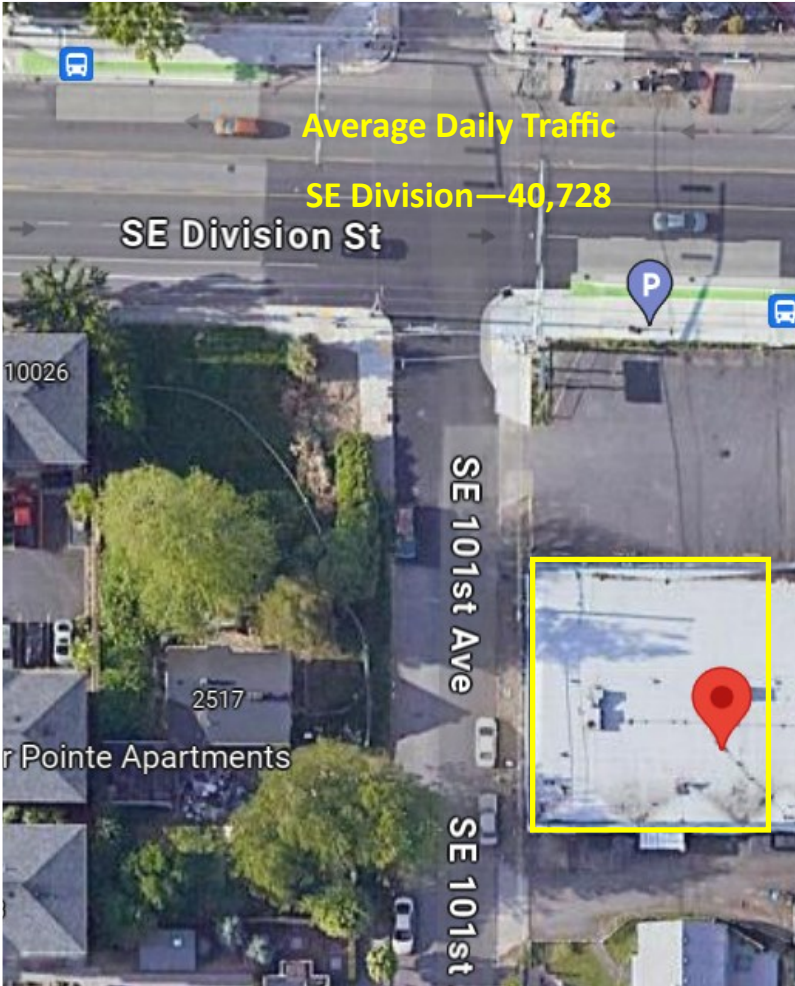
All information contained herein was obtained from sources deemed reliable. No guarantee is made with respect to accuracy. Specifications subject to change without notice.



# 10114 SE Division

## Demographics

	1 Mile	3 Mile	5 Mile
<b>Population:</b>	19,364	178,379	467,148
<b>Average HH Income:</b>	\$83,130	\$96,361	\$117,839



Ashley Rhea | 503.616.2942 | ashley@barnardcommercial.com

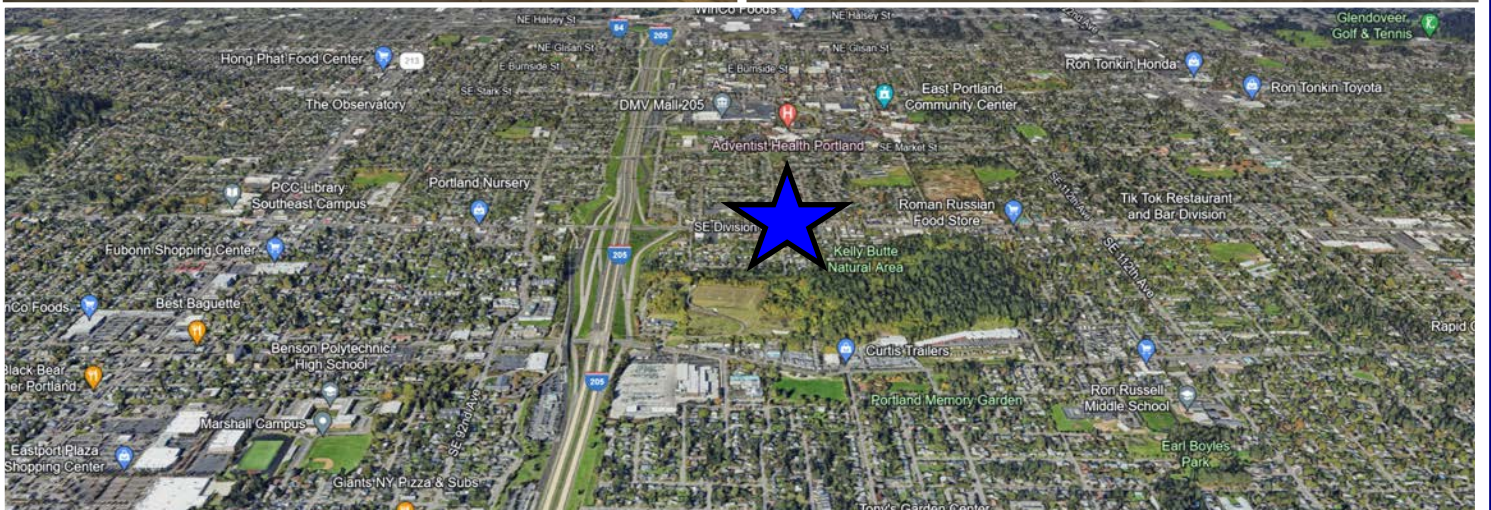
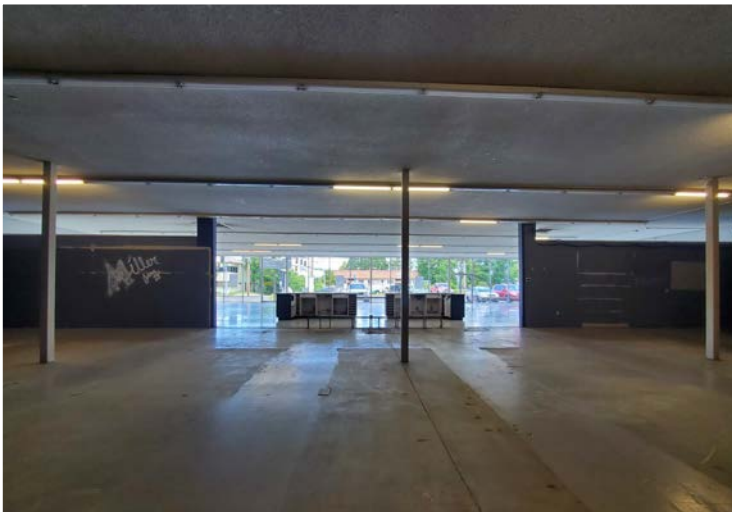
www.barnardcommercial.com | 5200 Meadows Road Suite 150, Lake Oswego OR 97035



Results Driven Retail Solutions <sup>SM</sup>

Barnard Commercial  
Real Estate

# 10114 SE Division



Ashley Rhea | 503.616.2942 | ashley@barnardcommercial.com  
www.barnardcommercial.com | 5200 Meadows Road Suite 150, Lake Oswego OR 97035

All information contained herein was obtained from sources deemed reliable. No guarantee is made with respect to accuracy. Specifications subject to change without notice.