

Results Driven Retail SolutionsSM

Barnard Commercial
Real Estate

Village at Main Street

8309-8699 SW Main Street, Wilsonville, OR 97070

The Village at Main is a planned community development with plaza style commercial buildings conveniently located adjacent to 464 apartment homes and a state of the art gym facility. The property sits right along the South West side of Wilsonville Road with the most visibility and presence of any commercial property in Wilsonville . It was designed to be a safe and easily walked destination for the dense residential that surrounds it while also being conveniently located for the remaining Wilsonville residents to access via car or public transit. The Tenant mix is diverse with neighbors including Red Robin, Wanker's Saloon, Jimmy John's, AT&T Wireless, Mattress Firm, Wells Fargo Bank, Gentle Dental, Benchmark Physical Therapy and many others.



Available:

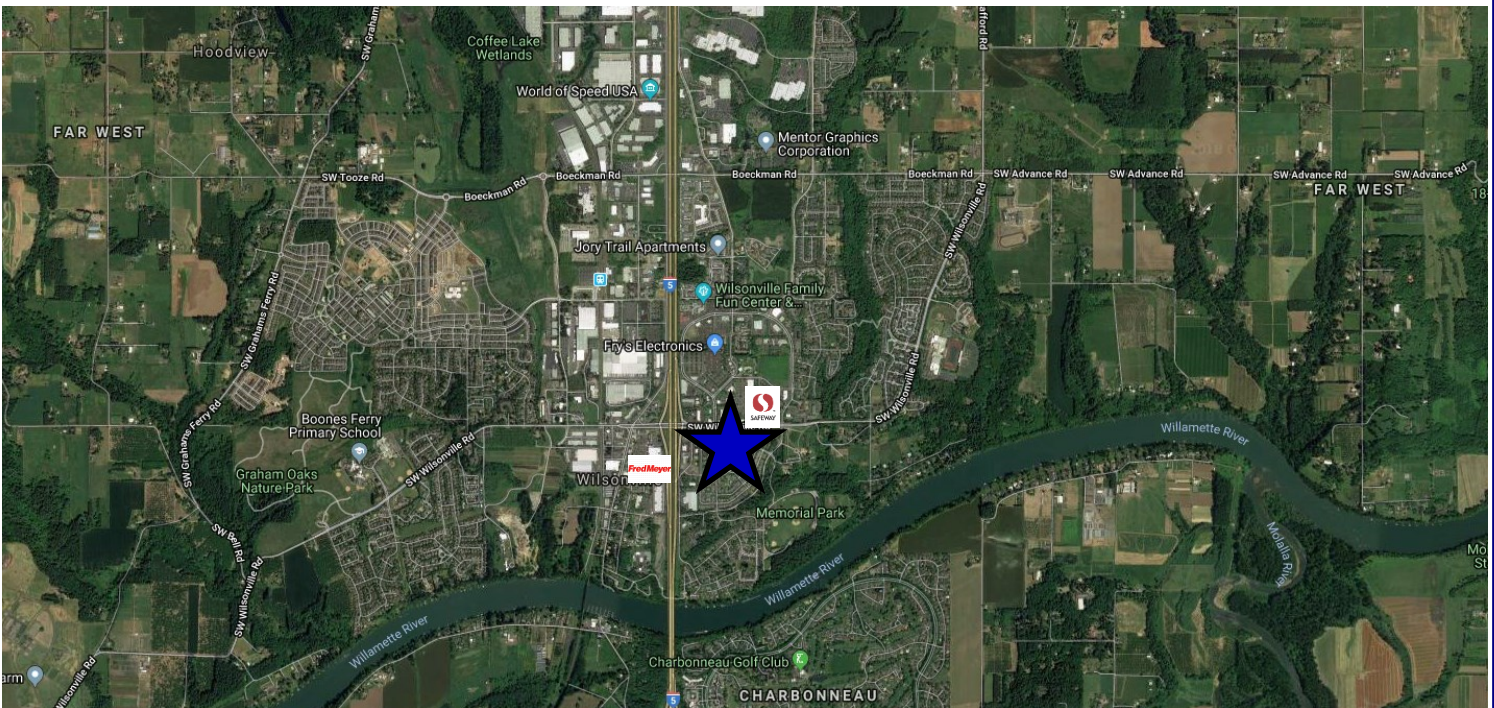
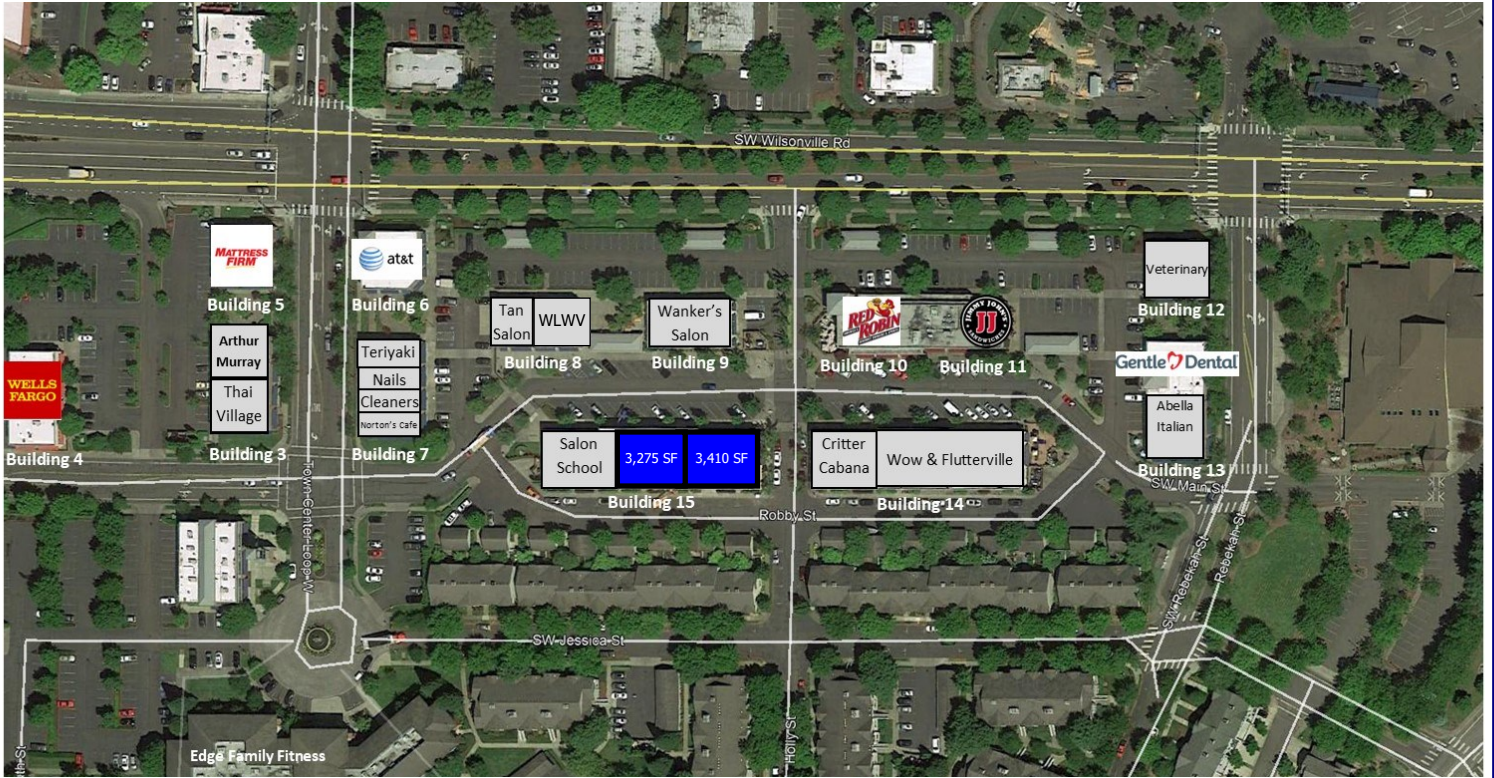
Building 15
Suite 100—3,410 SF
Suite 200—3,275 SF
\$22.00 PSF/Year, NNN

503.675.0900 | Craig Barnard or Ashley Rhea
craig@barnardcommercial.com | Ashley@barnardcommercial.com
www.barnardcommercial.com | 5200 Meadows Road, Suite 150, Lake Oswego, OR 97035

Results Driven Retail SolutionsSM

Barnard Commercial
Real Estate

Village at Main Street



503.675.0900 | Craig Barnard or Ashley Rhea
craig@barnardcommercial.com | Ashley@barnardcommercial.com
www.barnardcommercial.com | 5200 Meadows Road, Suite 150, Lake Oswego, OR 97035

All information contained herein was obtained from sources deemed reliable. No guarantee is made with respect to accuracy. Specifications subject to change without notice.