

Troutdale Commons

3125—3163 SE 257th Ave, Troutdale, OR 97060



Troutdale Commons is a Safeway and Walgreens anchored shopping center conveniently located at the corner of SE Stark Street and 257th Drive. Situated NE of Gresham and 2 miles south of I-84, considered the gateway to the Columbia River Gorge. This center has strong traffic with 13,759 vehicles along SE Stark at 257th and aided by Legacy Mt Hood Medical Center with 115 beds and Mt Hood Community College with 6,400 students, both located next to the shopping center, one on either side.



Craig Barnard | craig@barnardcommercial.com
Ashley Rhea | ashley@barnardcommercial.com

503.675.0900 | www.barnardcommercial.com | 5200 Meadows Road Suite 150, Lake Oswego OR 97035

Available:

Suite 25683 — 1,991 SF

Suite 25651 — 1,000 SF

Suite 25643 — 1,300 SF

Suite 3137 — 1,352 SF

Suite 3151 — 1,200 SF

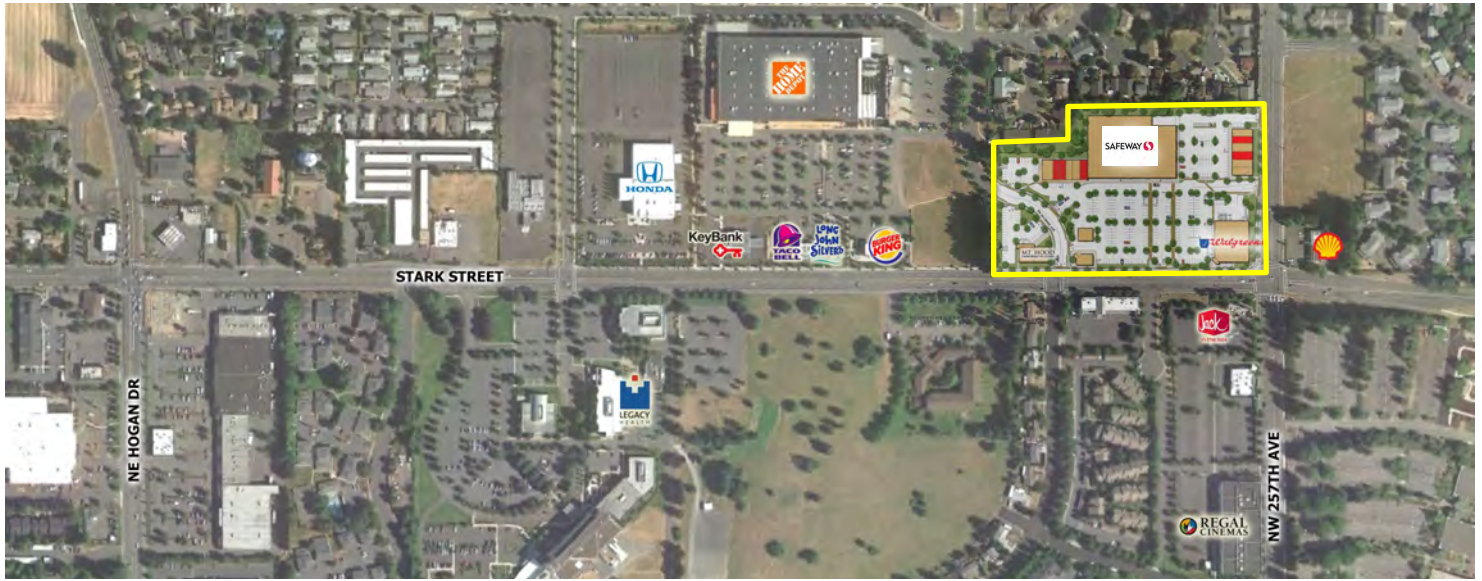
\$23.00 SF/Year, NNN
Approximately \$12.47 NNN



Craig Barnard | craig@barnardcommercial.com
Ashley Rhea | ashley@barnardcommercial.com

503.675.0900 | www.barnardcommercial.com | 5200 Meadows Road Suite 150, Lake Oswego OR 97035

Troutdale Commons



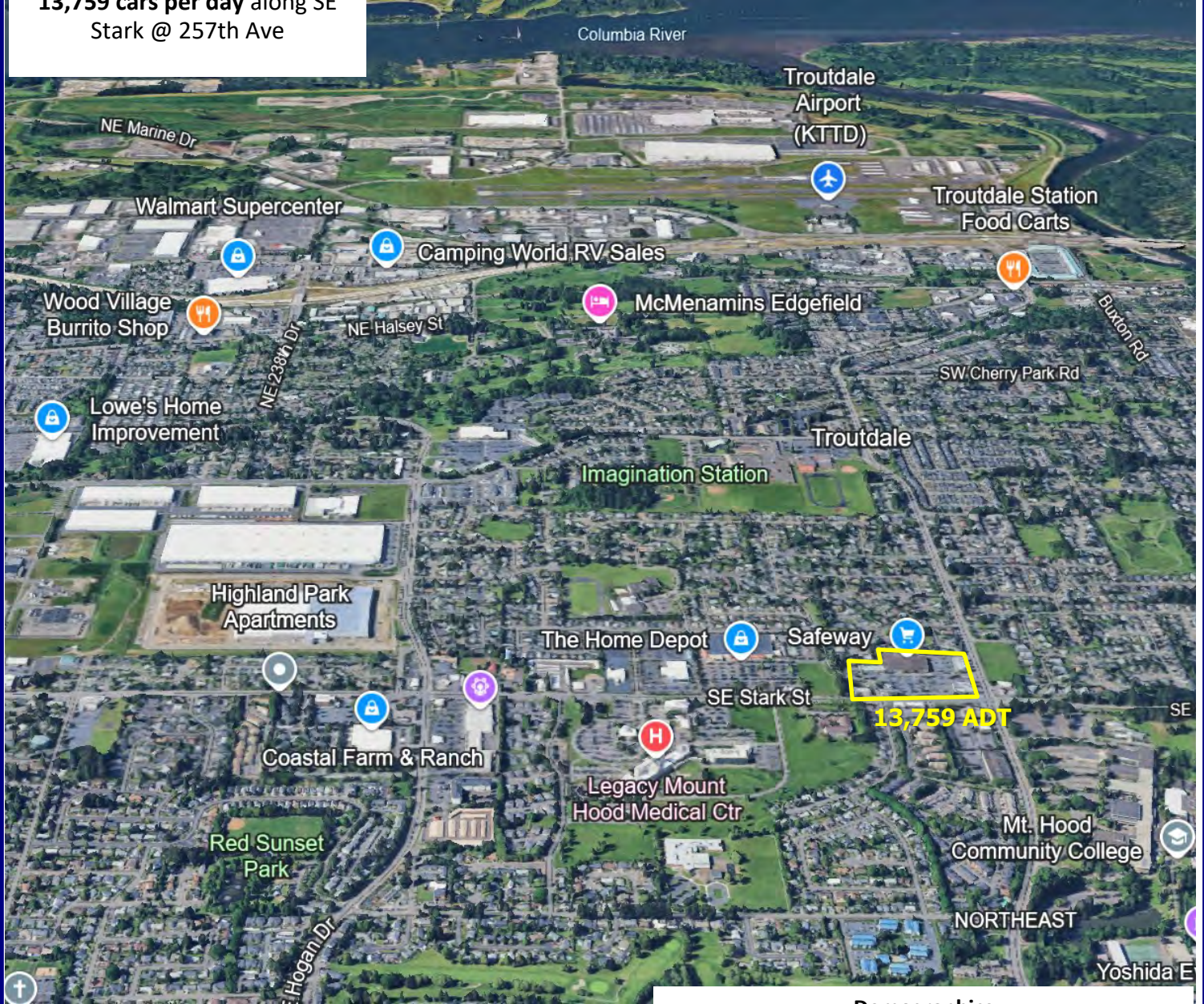
Craig Barnard | craig@barnardcommercial.com
Ashley Rhea | ashley@barnardcommercial.com

503.675.0900 | www.barnardcommercial.com | 5200 Meadows Road Suite 150, Lake Oswego OR 97035

Troutdale Commons

Average Daily Traffic:

13,759 cars per day along SE Stark @ 257th Ave



Demographics

	1 Mile	3 Mile	5 Mile
Population:	16,643	86,397	174,491
Average HH Income:	\$83,340	\$84,668	\$86,410

Craig Barnard | craig@barnardcommercial.com
Ashley Rhea | ashley@barnardcommercial.com

503.675.0900 | www.barnardcommercial.com | 5200 Meadows Road Suite 150, Lake Oswego OR 97035