

9710—9738 SE Washington St, Portland, OR 97216



205 Place is visible from I-205 and located just south of the I-205 and I-84 interchange in the Gateway trade area. Gateway is a high traffic and diverse commerce corridor surrounded by rooftops and easily accessible to the freeway. Neighboring tenants include McMenamins, Verizon, OnPoint CU, Mattress Firm, AT&T, FedEx and more.



Ashley Rhea | ashley@barnardcommercial.com
Craig Barnard | craig@barnardcommercial.com

503.675.0900 | www.barnardcommercial.com | 5200 Meadows Road Suite 150, Lake Oswego OR 97035



Available:

Building 9710
Suite B—2,520 SF

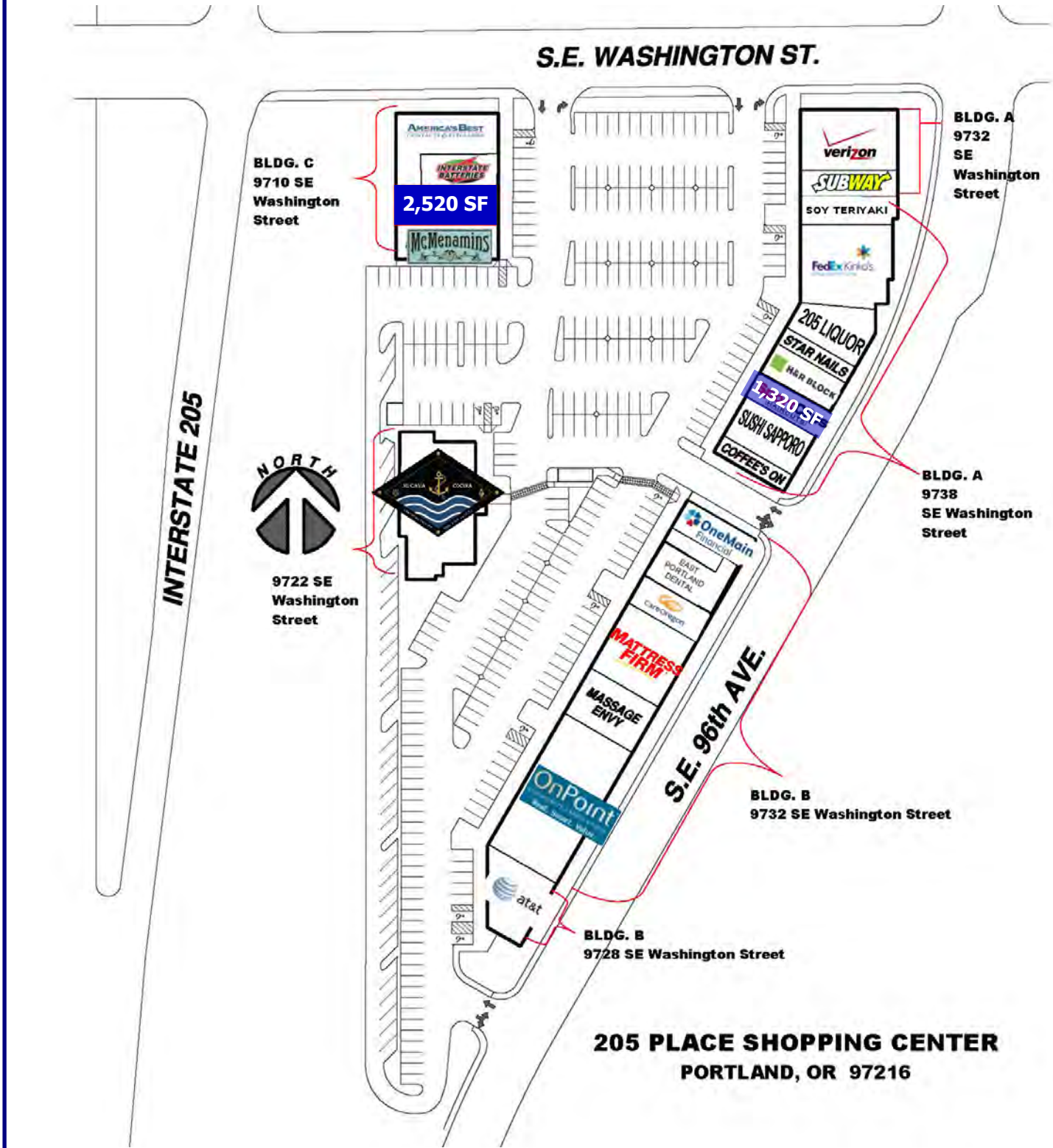
Building 9738
Suite P— 1,320 SF
Do Not Disturb Tenant

\$30.00 SF/Year, NNN
Approximately \$0.00 NNN



Ashley Rhea | ashley@barnardcommercial.com
Craig Barnard | craig@barnardcommercial.com

503.675.0900 | www.barnardcommercial.com | 5200 Meadows Road Suite 150, Lake Oswego OR 97035



**205 PLACE SHOPPING CENTER
PORTLAND, OR 97216**

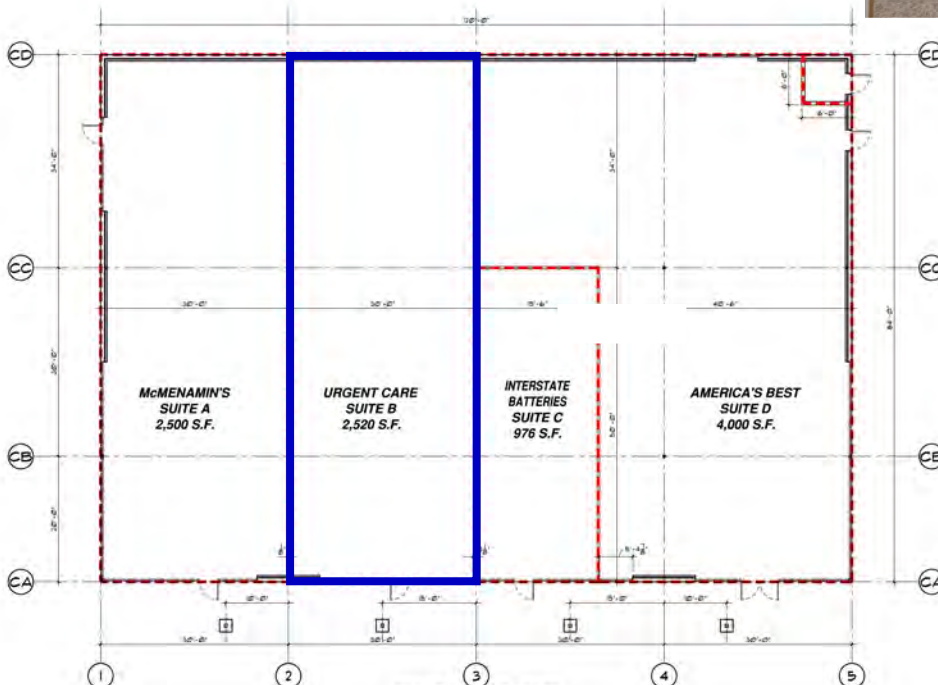
Ashley Rhea | ashley@barnardcommercial.com
Craig Barnard | craig@barnardcommercial.com

503.675.0900 | www.barnardcommercial.com | 5200 Meadows Road Suite 150, Lake Oswego OR 97035

All information contained herein was obtained from sources deemed reliable. No guarantee is made with respect to accuracy. Specifications subject to change without notice.



Building 9710 Suite B—2,520 SF



SPACE HIGHLIGHTS

- Former urgent care
- Reception and waiting area
- 4 Private rooms total, 2 with sinks
- 2 Open lab rooms, each with a sink
- 2 Restrooms
- X-ray room

SE WASHINGTON ST

Ashley Rhea | ashley@barnardcommercial.com
Craig Barnard | craig@barnardcommercial.com

503.675.0900 | www.barnardcommercial.com | 5200 Meadows Road Suite 150, Lake Oswego OR 97035

Average Daily Traffic:

150,396 cars per day along I-205
@ Washington Street

18,290 cars per day along
Washington Street @ I-205



	Demographics		
	1 Mile	3 Mile	5 Mile
Population:	20,457	191,610	429,442
Average HH Income:	\$80,770	\$94,503	\$99,778

Ashley Rhea | ashley@barnardcommercial.com
Craig Barnard | craig@barnardcommercial.com

503.675.0900 | www.barnardcommercial.com | 5200 Meadows Road Suite 150, Lake Oswego OR 97035