

Rockwood Plaza

2330 SE 182nd Ave, Portland OR 97233

This shopping center is located in the Centennial neighborhood of SE Portland on the NE corner of Division and SE 182nd Ave. There is high daily traffic with **31,200 cars per day** on SE 182nd Ave and 20,000 cars per day on Division. This center has **ample parking and great signage.** Major traffic generators include Blackrock Coffee, Planet Fitness, Dollar Tree and Pub 181.



Available:

921 SF

\$22.00 SF/Year, NNN

**Available 4/10/23*

6,000 SF

\$15.00 SF/Year, NNN

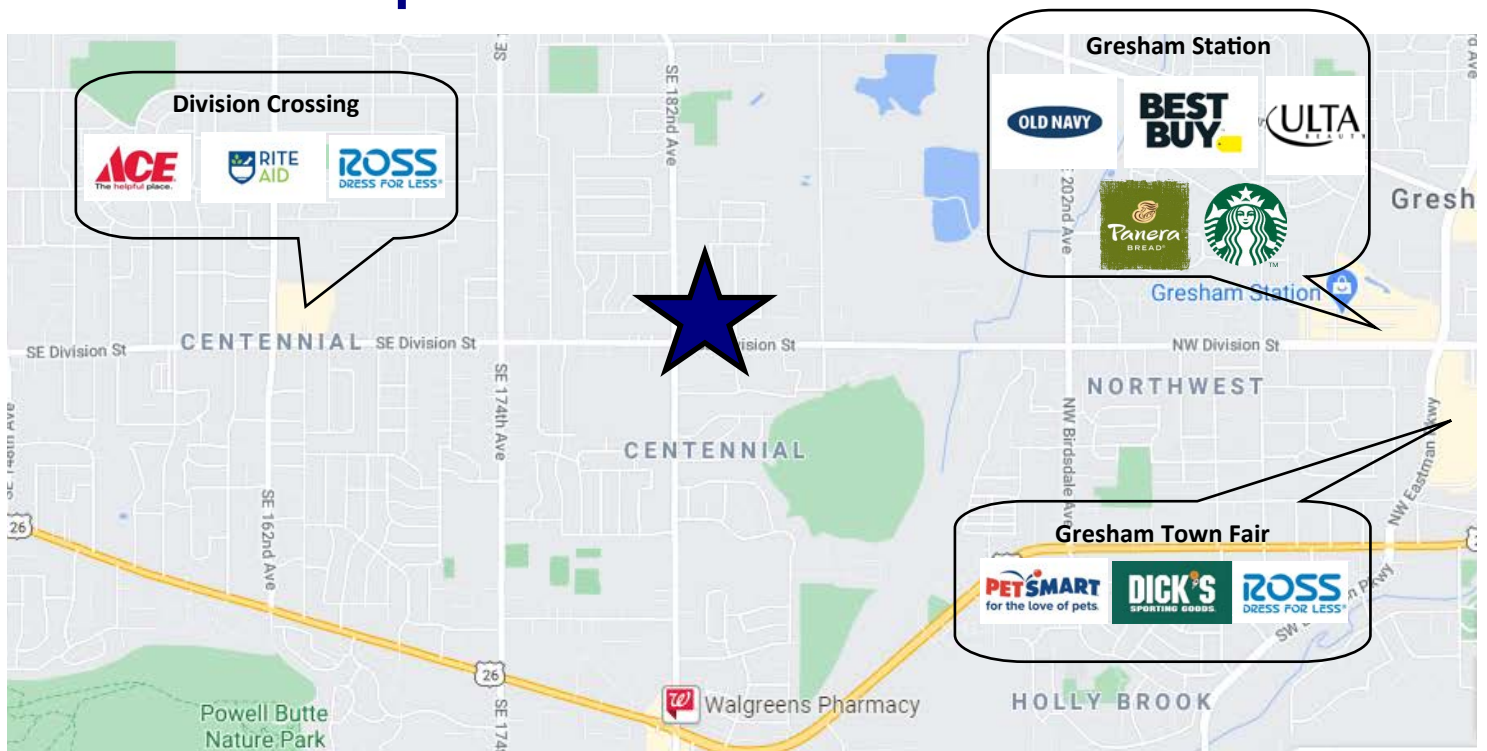
2,710 SF

\$15.00 SF/Year, NNN

Approx. \$4.50 NNN

**Craig Barnard | 503.616.2941 | craig@barnardcommercial.com
www.barnardcommercial.com | 5200 Meadows Road Suite 150, Lake Oswego OR 97035**

Rockwood Plaza

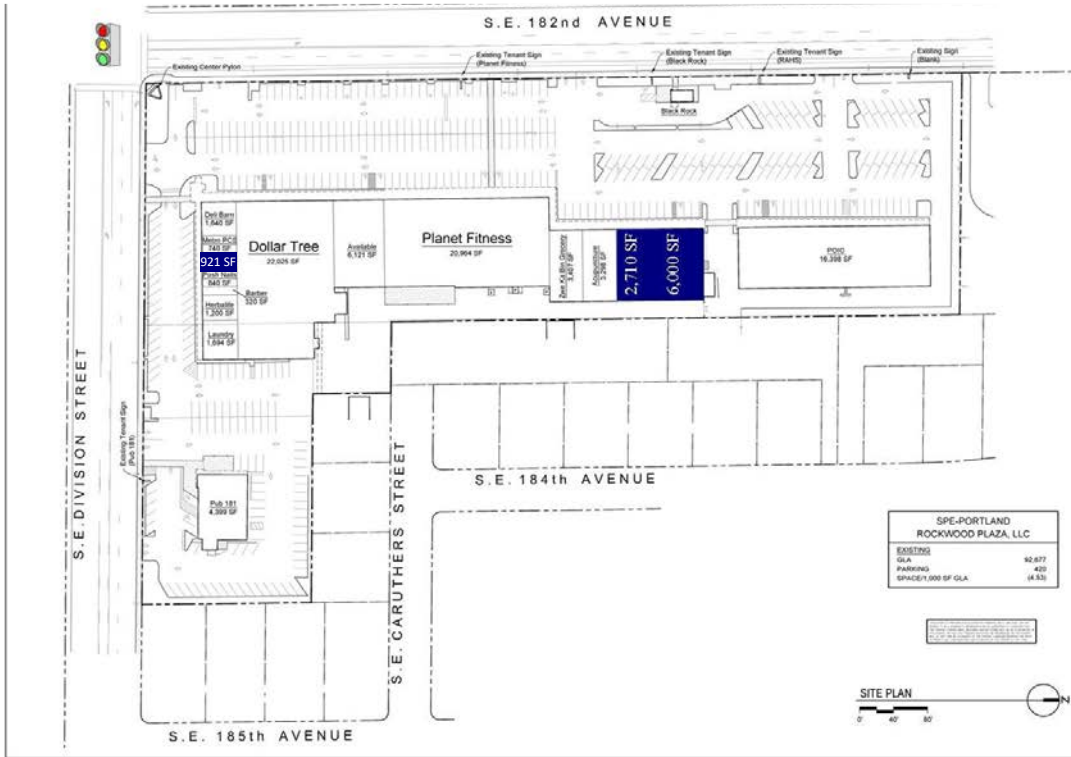


Demographics

	1 Mile	3 Mile	5 Mile
Population:	20,901	154,581	309,630
Average HH Income:	\$62,587	\$71,934	\$76,285

Craig Barnard | 503.616.2941 | craig@barnardcommercial.com
www.barnardcommercial.com | 5200 Meadows Road Suite 150, Lake Oswego OR 97035

Rockwood Plaza



Craig Barnard | 503.616.2941 | craig@barnardcommercial.com
www.barnardcommercial.com | 5200 Meadows Road Suite 150, Lake Oswego OR 97035