

NE Glisan Retail

6014-6026 NE Glisan Street, Portland, OR 97213

North Tabor neighborhood ground floor space available on the corner of Glisan St and 60th Ave. The building exterior has been updated with contemporary design aesthetics. This location has high traffic counts, great visibility and easy walkability within the community. The green, red and blue max line stops are .2 miles North and the Providence hospital is .6 miles West, both a short walk. Seven Virtues Coffee is across the street and a family Greek restaurant is under construction in the corner building.



Available:

Suite 6016—800 SF
Suite 6024—680 SF

\$22.00 PSF/Year, NNN

Approx. NNN \$8.81 SF/Year

Demographics

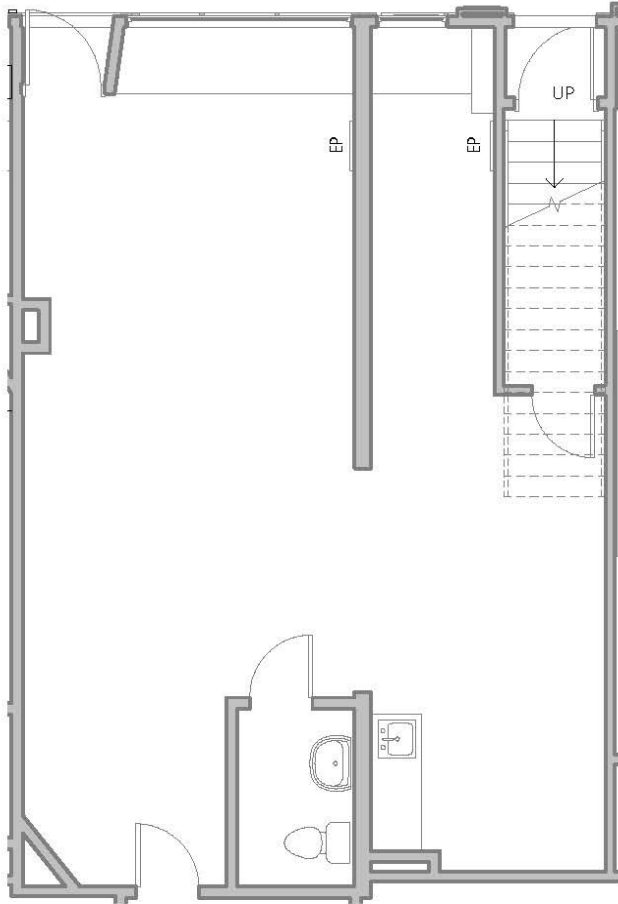
	1 Mile	3 Mile	5 Mile
Population:	26,629	224,926	496,772
Average HH Income:	\$88,944	\$84,821	\$81,797



Ashley Rhea | 503.616.2942 | ashley@barnardcommercial.com
www.barnardcommercial.com | 5200 Meadows Road, Suite 150, Lake Oswego, OR 97224

NE Glisan Retail

6014-6026 NE Glisan Street, Portland, OR 97213



Suite 6016—800 SF

Hardware floors

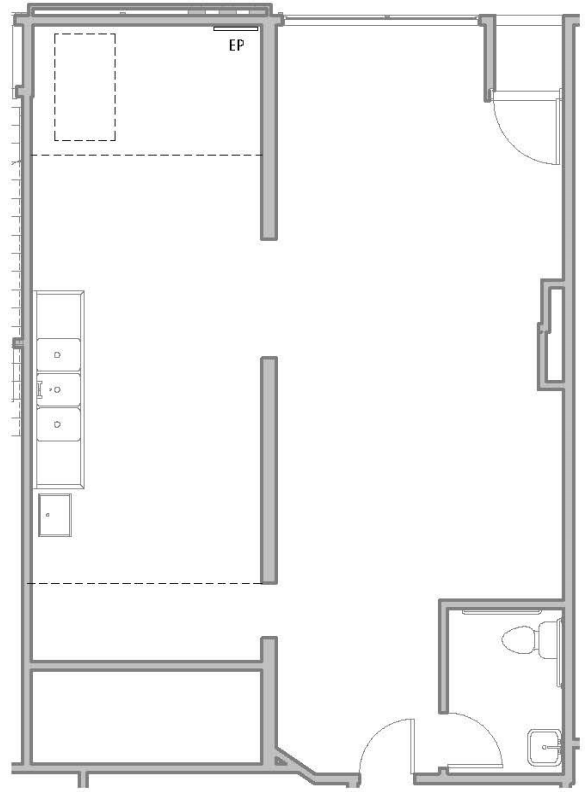
Lots of natural light



Ashley Rhea | 503.616.2942 | ashley@barnardcommercial.com
www.barnardcommercial.com | 5200 Meadows Road, Suite 150, Lake Oswego, OR 97224

NE Glisan Retail

6014-6026 NE Glisan Street, Portland, OR 97213



Suite 6024—680 SF
3 compartment sink
Restroom

Ashley Rhea | 503.616.2942 | ashley@barnardcommercial.com
www.barnardcommercial.com | 5200 Meadows Road, Suite 150, Lake Oswego, OR 97224