

Results Driven Retail Solutions<sup>SM</sup>

**Barnard Commercial**  
Real Estate

# Burnside Commons

1600 NW Fairview Drive, Gresham OR 97030

This property is located on Fairview Drive at the Burnside Road intersection. With average daily traffic between 27,159 and 29,141 cars per day on Burnside either side of Fairview Drive, this is a highly trafficked street. The City of Gresham is the fourth largest city in Oregon with approximately 105,594 people residing in the city. Gresham High School is located across the street and has an enrollment of 1,782 students. Neighboring tenants include Furniture Connection, Jackpot Lottery Deli, Mr J's, Nextt resale clothing, Massage and Chiropractic.



## **Available:**

**Suite 1600— 3,383 SF\***  
*\*Do Not Disturb Tenant End Cap*

**Type II hood, grease trap,  
hand washing sink and 2  
restrooms**

**\$25.00 SF/Year, NNN  
\$6.00 NNN**

Craig Barnard | [craig@barnardcommercial.com](mailto:craig@barnardcommercial.com) | 503.616.2941  
Ashley Rhea | [ashley@barnardcommercial.com](mailto:ashley@barnardcommercial.com) | 503.616.2942  
[www.barnardcommercial.com](http://www.barnardcommercial.com) | 503.675.0900  
5200 Meadows Road, Suite 150, Lake Oswego, OR 97035

Results Driven Retail Solutions<sup>SM</sup>

Barnard Commercial  
Real Estate

# Burnside Commons



**Average Daily Traffic  
(cars per day)**

Burnside, E of Eastman  
Parkway—27,159

Eastman Parkway, N of  
Burnside—19,506



Craig Barnard | [craig@barnardcommercial.com](mailto:craig@barnardcommercial.com) | 503.616.2941  
Ashley Rhea | [ashley@barnardcommercial.com](mailto:ashley@barnardcommercial.com) | 503.616.2942  
[www.barnardcommercial.com](http://www.barnardcommercial.com) | 503.675.0900  
5200 Meadows Road, Suite 150, Lake Oswego, OR 97035

# Burnside Commons

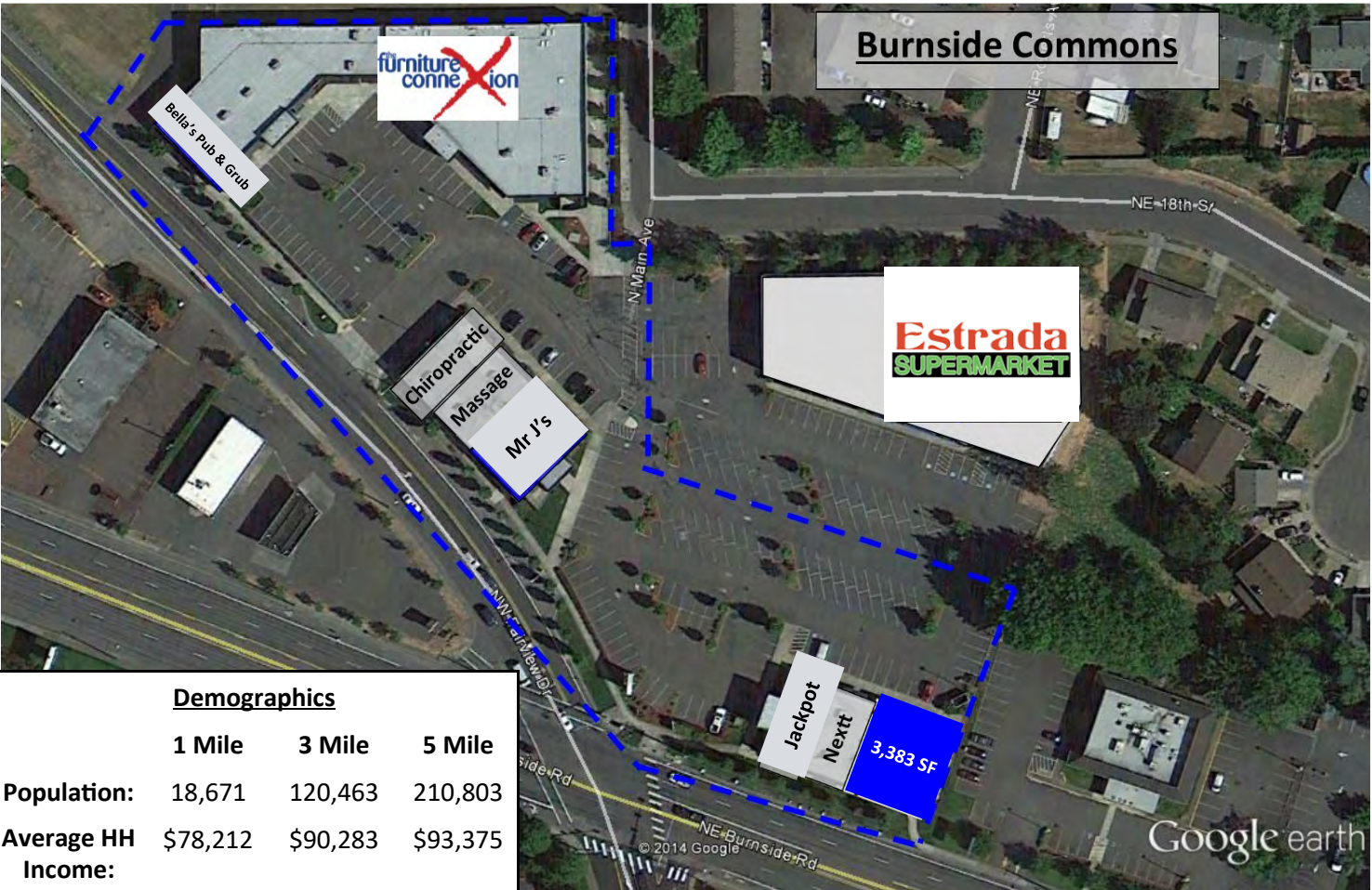


## SPACE HIGHLIGHTS:

- Grease trap
- Type II hood
- 2 ADA restrooms
- High average daily traffic
- Outdoor seating
- Tall ceilings
- Ample Parking

Craig Barnard | [craig@barnardcommercial.com](mailto:craig@barnardcommercial.com) | 503.616.2941  
Ashley Rhea | [ashley@barnardcommercial.com](mailto:ashley@barnardcommercial.com) | 503.616.2942  
[www.barnardcommercial.com](http://www.barnardcommercial.com) | 503.675.0900  
5200 Meadows Road, Suite 150, Lake Oswego, OR 97035

# Burnside Commons



**Demographics**

	1 Mile	3 Mile	5 Mile
<b>Population:</b>	18,671	120,463	210,803
<b>Average HH Income:</b>	\$78,212	\$90,283	\$93,375

Craig Barnard | [craig@barnardcommercial.com](mailto:craig@barnardcommercial.com) | 503.616.2941  
 Ashley Rhea | [ashley@barnardcommercial.com](mailto:ashley@barnardcommercial.com) | 503.616.2942  
[www.barnardcommercial.com](http://www.barnardcommercial.com) | 503.675.0900  
 5200 Meadows Road, Suite 150, Lake Oswego, OR 97035